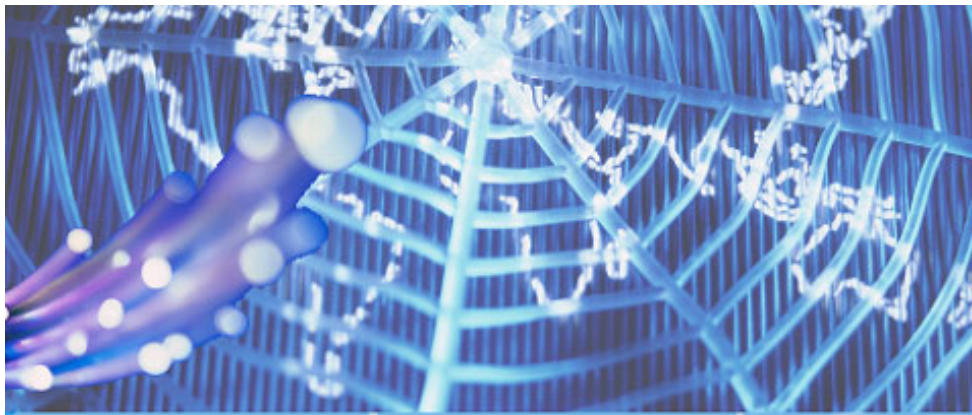




PCCW[®]
電訊盈科



010101010101010101

0101010101010101

0101010101010101

0101010101010101

0101010101010101

0101010101010101



PCCW Engineering

Graduate Trainee Program

Who are we?

PCCW Limited (SEHK: 0008) is the premier telecommunications provider in Hong Kong and a world-class player in Information & Communications Technologies. As provider of Hong Kong's first quadruple-play experience, PCCW offers a range of innovative media content and services across four delivery platforms – fixed-line, broadband Internet access, TV and mobile. In addition, the Company meets the sophisticated needs of the international business community, while supporting network operators with cutting-edge technical services and handling large-scale IT outsourcing projects for public and private sector organizations.

As part of meeting PCCW's complex technology requirements, PCCW Engineering designed, built and operates the world's largest commercial IPTV deployment. PCCW Engineering also provides network-reliant organizations with a wide range of cutting-edge technical services that include designing, building and operating network infrastructures, operations centers and integrated network management systems, as well as outsourcing and technical consultancy.



What is the objective of the Graduate Trainee Program?

The program's objective is to train graduates to become all round engineers in telecoms / IP / IT / commercial areas to meet the Company's business needs.

During the course of the training program, trainees will be engaged in the study of communications / IT networks and systems and gain exposure to IT / telecoms and business areas, such as project, bid and contract management.



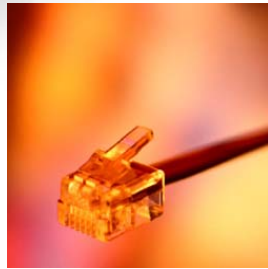
Program Structure

This is a 2-year program, during which trainees will undergo:

- Field visits / assimilation
- Classroom training
- Short attachments
- Specialized training in a business area for placement
- Joint project studies

What do we expect from you?

- Bachelor degree, majoring in Information Technology, Telecommunications, Computer Engineering, Computer Science, Electronic Engineering, Electrical Engineering or equivalent
- Strong business acumen, innovative and analytical mindset, results-oriented and strong interpersonal and communication skills
- High mobility and willingness to work outside of Hong Kong
- Relevant experience and multi-lingual capability an advantage



How to Apply

Please apply for the PCCW Engineering Graduate Trainee Program at <http://www.pccw.com/Careers>, select the program and complete the online application form. The submission deadline is posted on the website. Shortlisted candidates will be invited to provide further information and attend an interview and assessment session in Hong Kong.

Need to know more?

For inquiries, please email us at career@pccw.com. To apply, please submit your online application form at <http://www.pccw.com/Careers>.

March 2010